



AfiCollar



afimilk®

CONHECIMENTO VITAL EM CADA MOVIMENTO



Top Detec.Cio



Ruminação+Ingestão



Aplicação Saúde



Qualidade ID Animal



Integrado com
sensores de leite



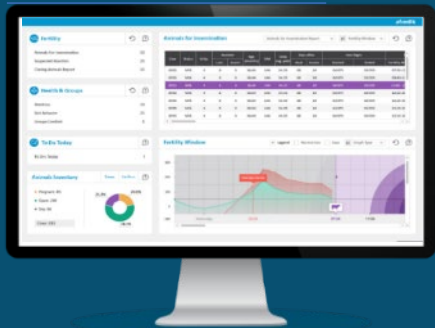
CONHECIMENTO VITAL

Novo leitor
Adequado para uso em exteriores



AfiCollar

AfiFarm™ 5.4



EM CADA MOVIMENTO

Alcance antena – até 500 m
Bateria – até 7 anos
Armazenamento – + 24hs
Acelerometro 3D
NFC informação (leitor para Cel).



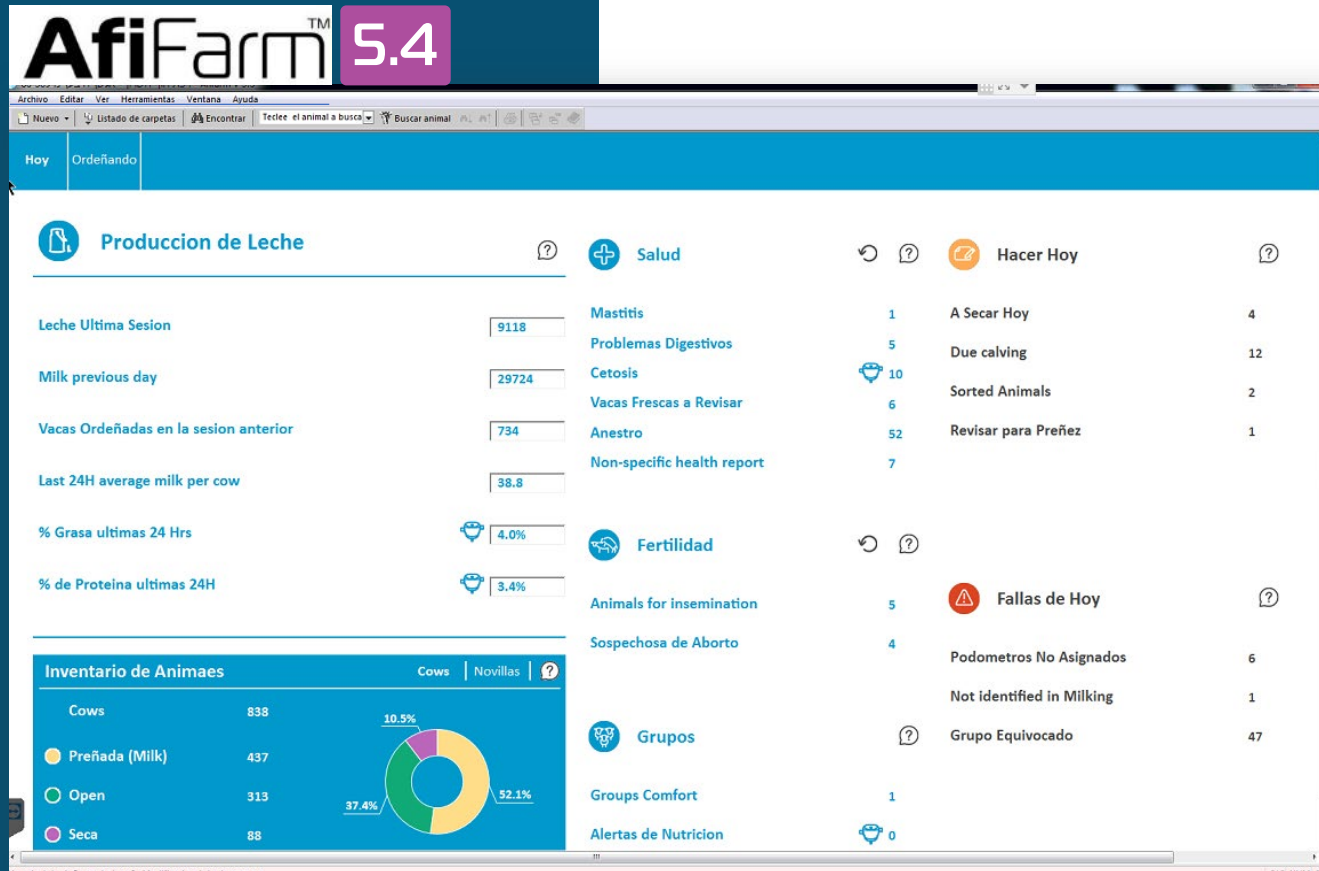
CONHECIMENTO VITAL EM CADA MOVIMENTO



- AfiFarm 5.4 – integrado
- App para telefones – integrado
- Integrado com instalações de ordenha
- Afisort + Weight – (porta de separação)



CONHECIMENTO VITAL EM CADA MOVIMENTO



CONHECIMENTO VITAL EM CADA MOVIMENTO

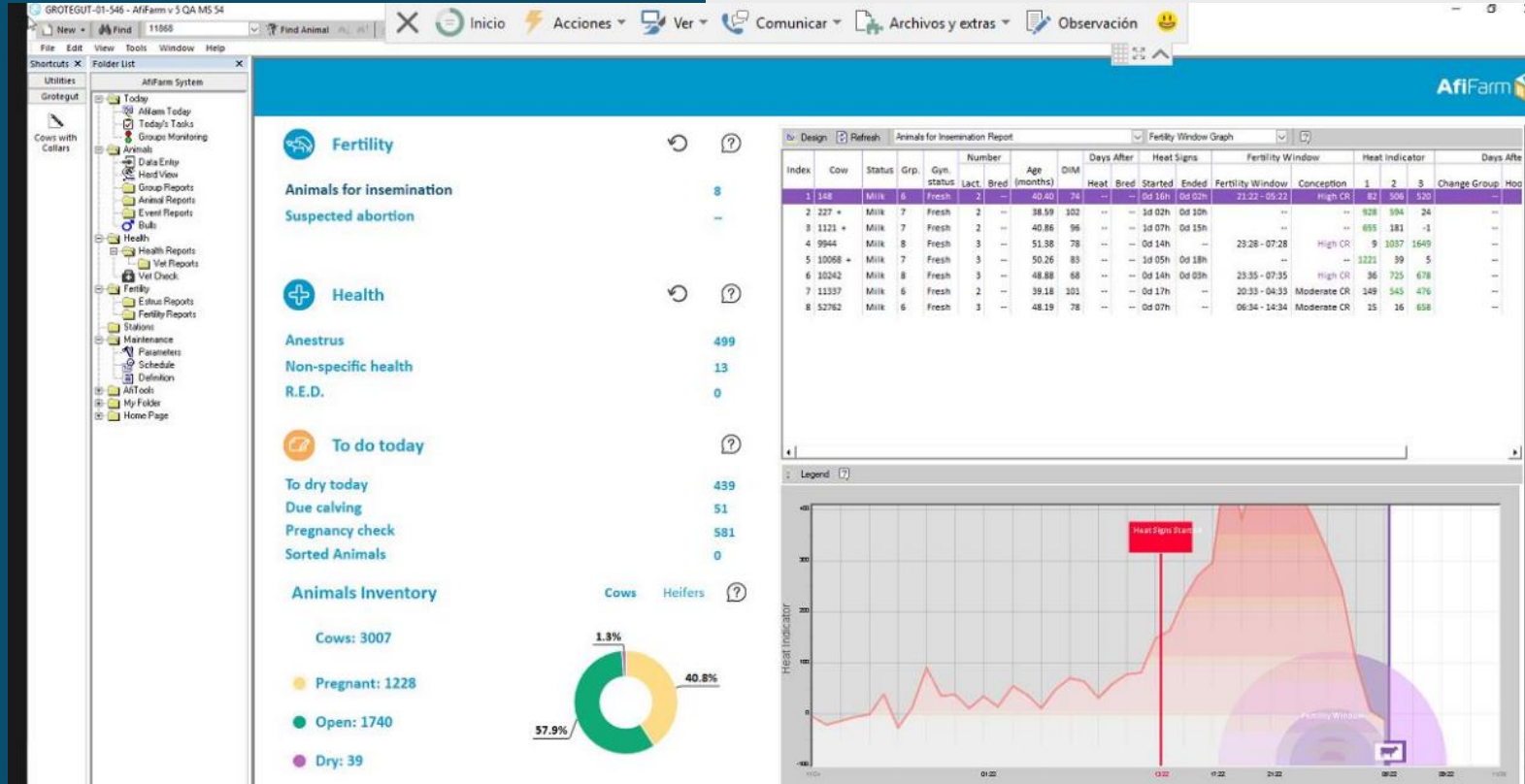


Vantagens únicas:

- Tecnologia integrada com novos algoritmos.
- Detecção e relatórios de saúde precisos.
- Combinação para relatórios de saúde de:
 1. Produção de leite
 2. Ruminação
 3. Ingestão

CONHECIMENTO VITAL EM CADA MOVIMENTO

Relatório de Animais para inseminação



CONHECIMENTO VITAL EM CADA MOVIMENTO

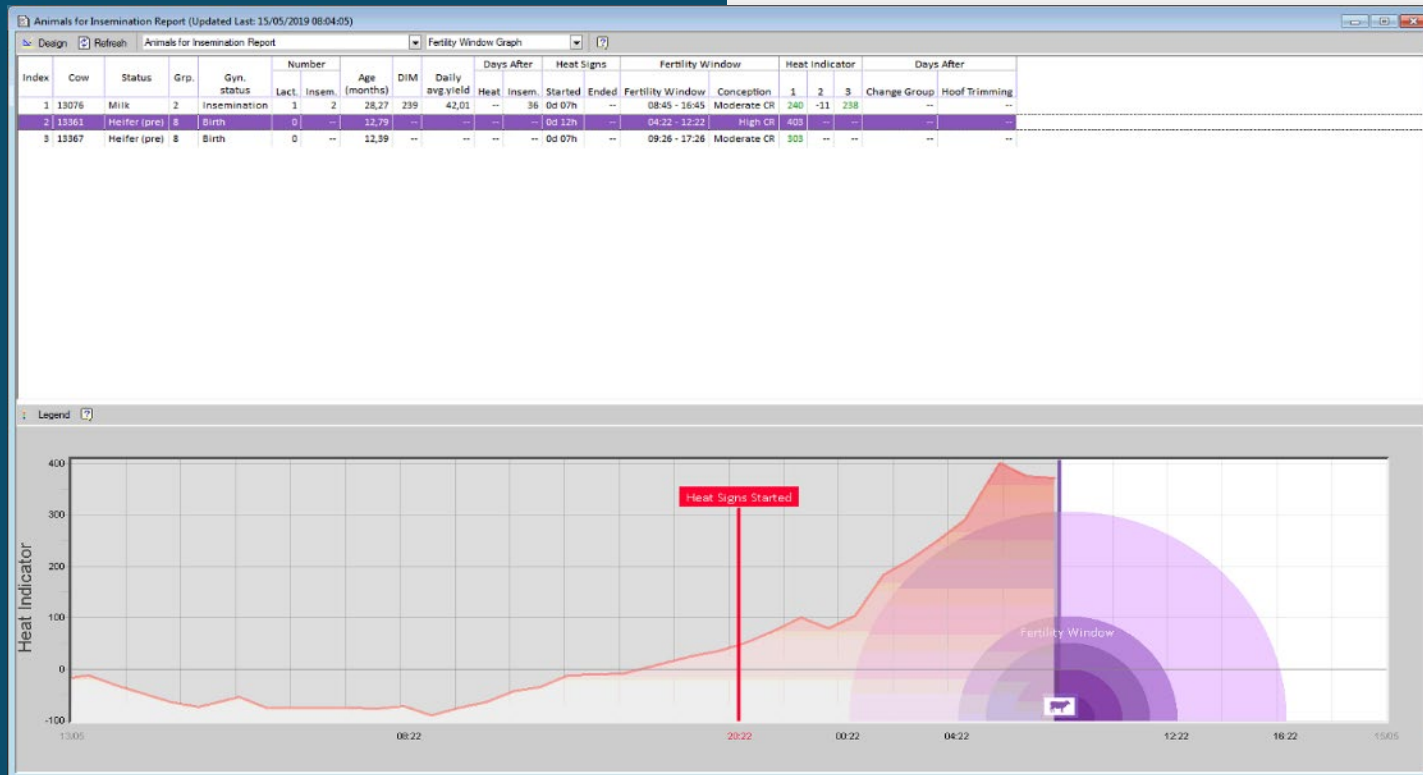
Relatório de vacas para inseminar

Index	Cow	Status	Grp.	Gyn. status	Number		Age (months)	DIM	Days After		Heat Signs		Fertility Window		Heat Indicator			Days After	
					Lact.	Bred			Heat	Bred	Started	Ended	Fertility Window	Conception	1	2	3	Change Group	Hot
1	148	Milk	6	Fresh	2	--	40.40	74	--	--	0d 16h	0d 02h	21:22 - 05:22	High CR	82	506	520	--	--
2	227 +	Milk	7	Fresh	2	--	38.59	102	--	--	1d 02h	0d 10h	--	--	928	594	24	--	--
3	1121 +	Milk	7	Fresh	2	--	40.86	95	--	--	1d 07h	0d 15h	--	--	655	181	-1	--	--
4	9944	Milk	8	Fresh	3	--	51.38	78	--	--	0d 14h	--	23:28 - 07:28	High CR	9	1087	1649	--	--
5	10068 +	Milk	7	Fresh	3	--	50.26	83	--	--	1d 05h	0d 18h	--	--	1221	39	5	--	--
6	10242	Milk	8	Fresh	3	--	48.88	68	--	--	0d 14h	0d 03h	23:35 - 07:35	High CR	36	725	678	--	--
7	11337	Milk	6	Fresh	2	--	39.18	101	--	--	0d 17h	--	20:33 - 04:33	Moderate CR	149	545	476	--	--
8	52762	Milk	6	Fresh	3	--	48.19	78	--	--	0d 07h	--	06:34 - 14:34	Moderate CR	15	16	658	--	--

- Janela de inseminação
- Momento ótimo
- Hora de início e final da atividade

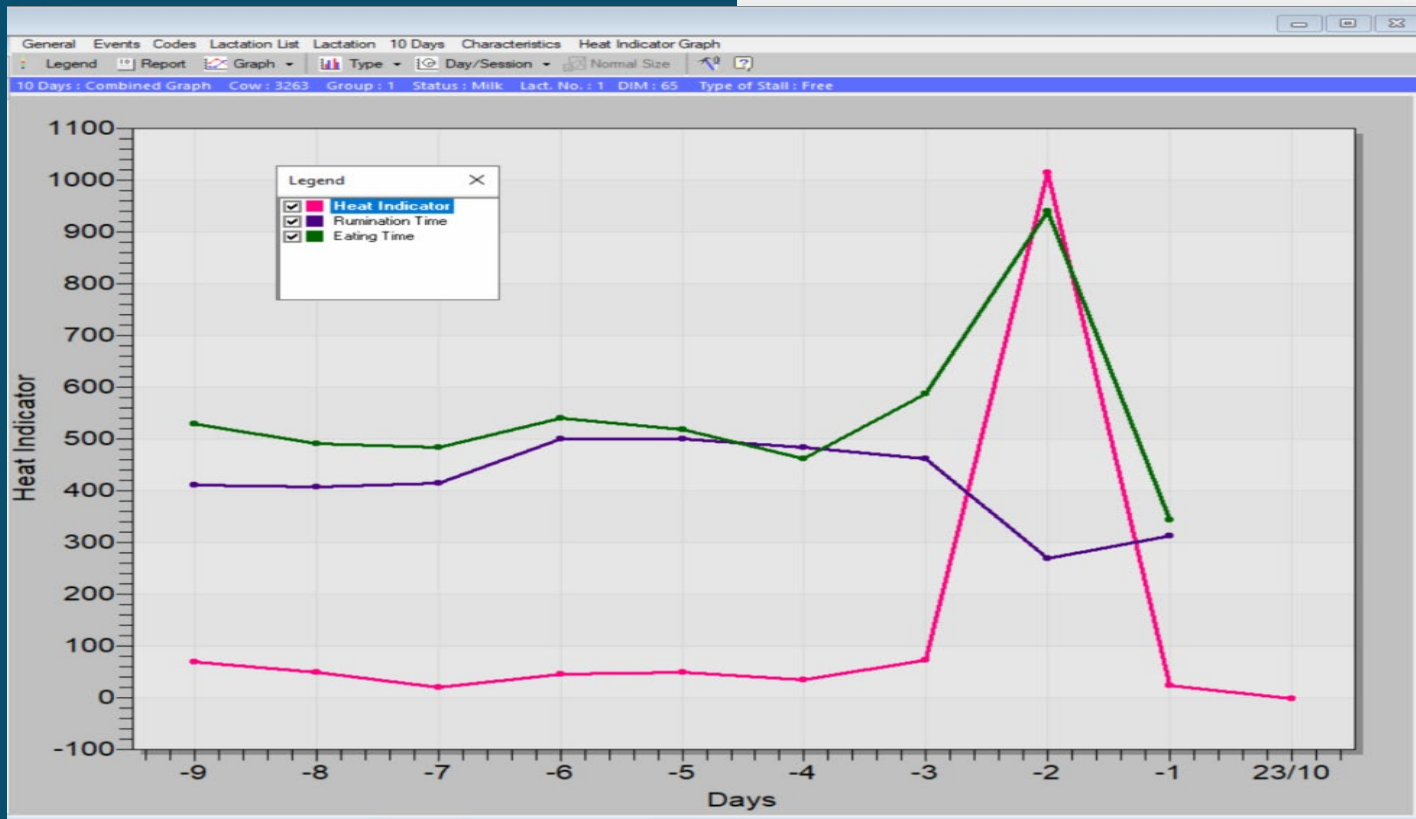
CONHECIMENTO VITAL EM CADA MOVIMENTO

RELATÓRIO DE INSEMINAÇÃO



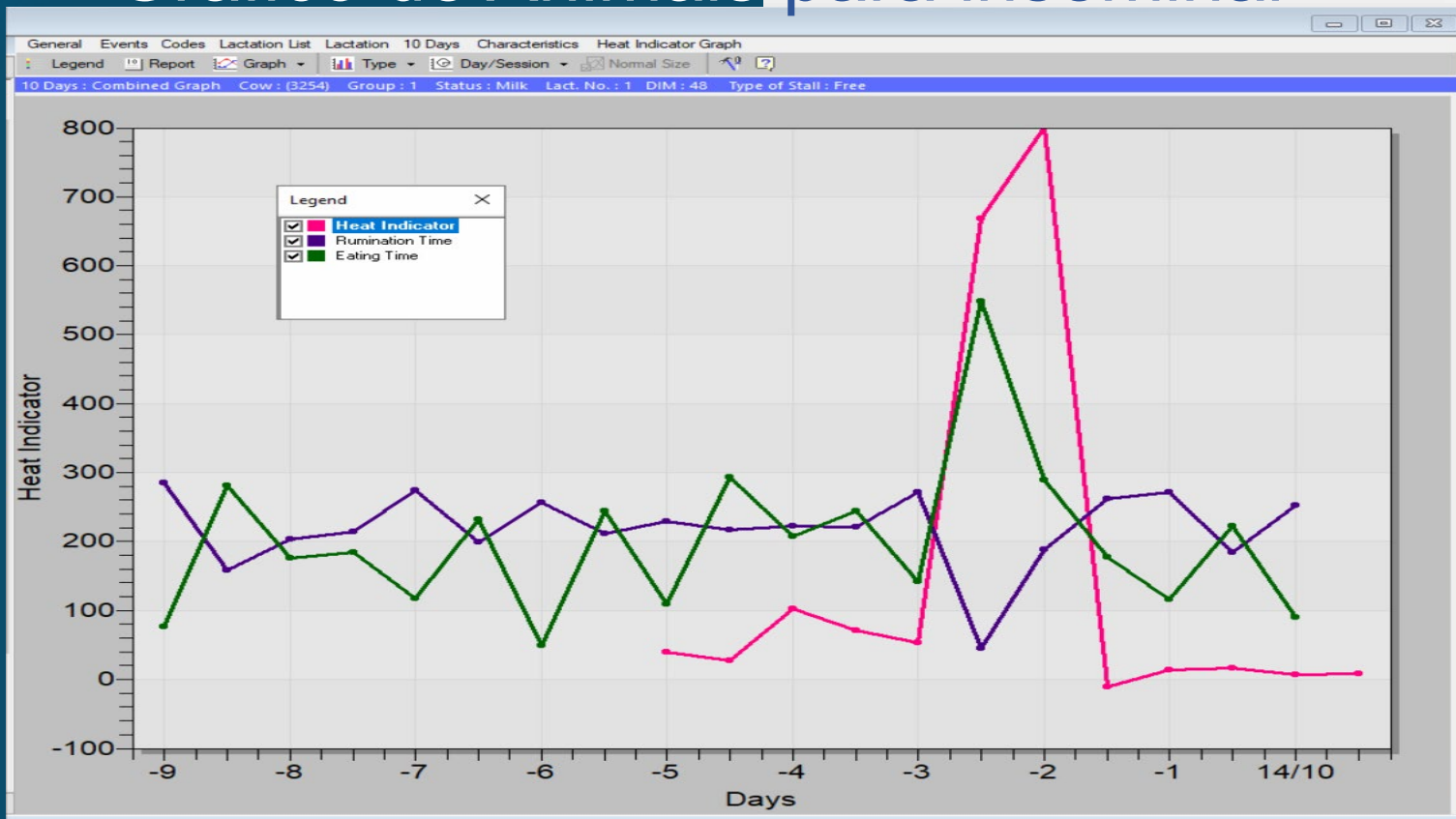
CONHECIMENTO VITAL EM CADA MOVIMENTO

Gráfico de Animais para inseminar



CONHECIMENTO VITAL EM CADA MOVIMENTO

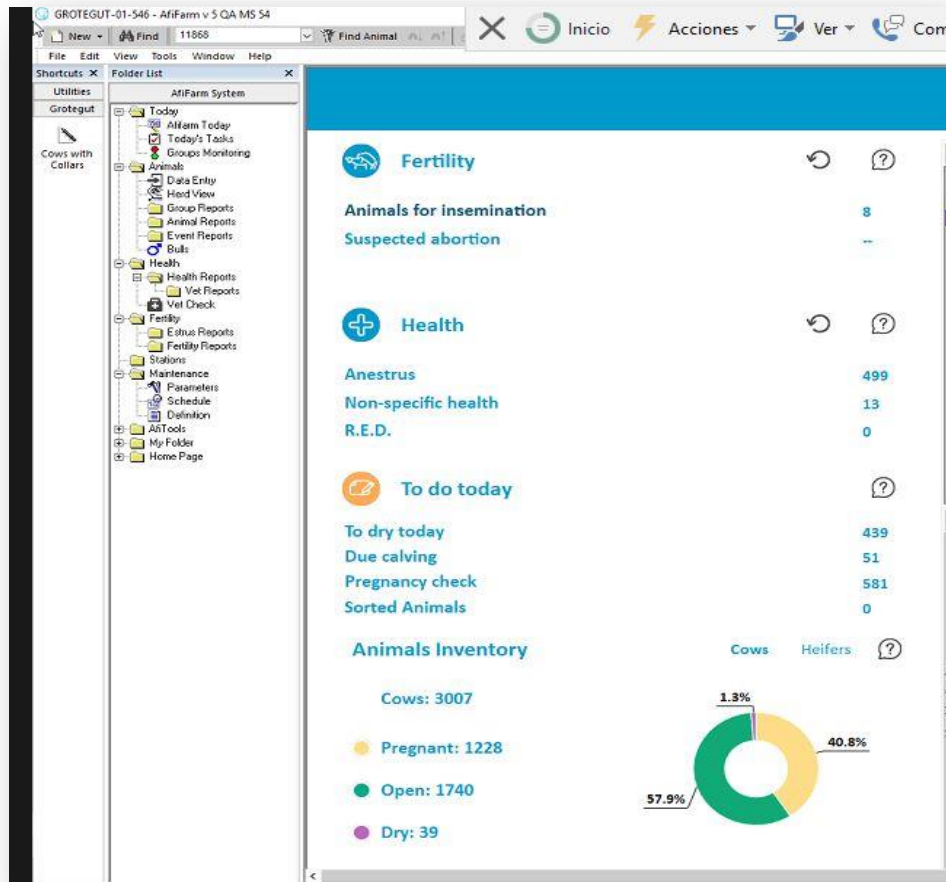
Gráfico de Animais para inseminar



CONHECIMENTO VITAL

EM CADA MOVIMENTO

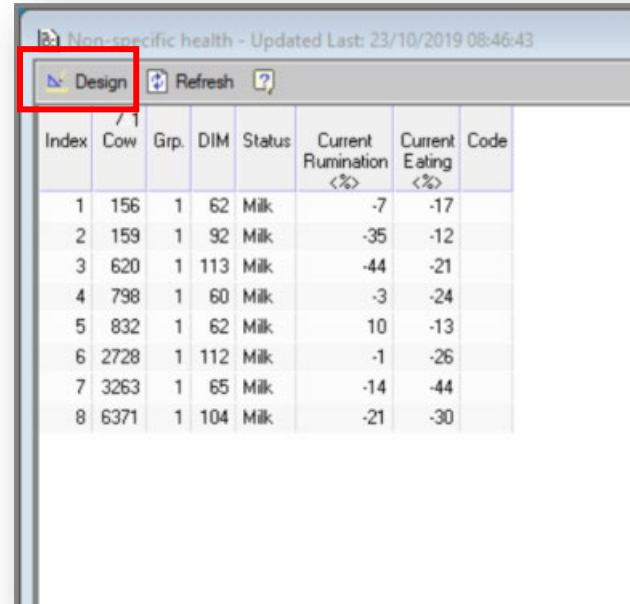
Relatórios de Saúde



CONHECIMENTO VITAL

EM CADA MOVIMENTO

Relatório
de animais
enfermos



Non-specific health - Updated Last: 23/10/2019 08:46:43

Design Refresh ?

Index	Cow	Grp.	DIM	Status	Current Ruminations <%>	Current Eating <%>	Code
1	156	1	62	Milk	-7	-17	
2	159	1	92	Milk	-35	-12	
3	620	1	113	Milk	-44	-21	
4	798	1	60	Milk	-3	-24	
5	832	1	62	Milk	10	-13	
6	2728	1	112	Milk	-1	-26	
7	3263	1	65	Milk	-14	-44	
8	6371	1	104	Milk	-21	-30	

CONHECIMENTO VITAL

EM CADA MOVIMENTO

Configuração de parâmetros

Deviation Report Parameters

Health | Ingestion Health | Estrus | Weight | Milk Components

General

Hours in report 24

Hours after heat 24

Combined rumination and eating

Animal Status (M - Milk, D - Dry, H - Heifer)

	M	D	H	
Rumination Deviation (%)	30	30	30	-
Eating Deviation (%)	20	20	20	-
Hours between deviations	12	12	12	

Only rumination

Animal Status (M - Milk, D - Dry, H - Heifer)

	M	D	H	
Deviation (%)	45	45	45	-
Consecutive deviation in hours	3	3	3	

Only eating

Animal Status (M - Milk, D - Dry, H - Heifer)

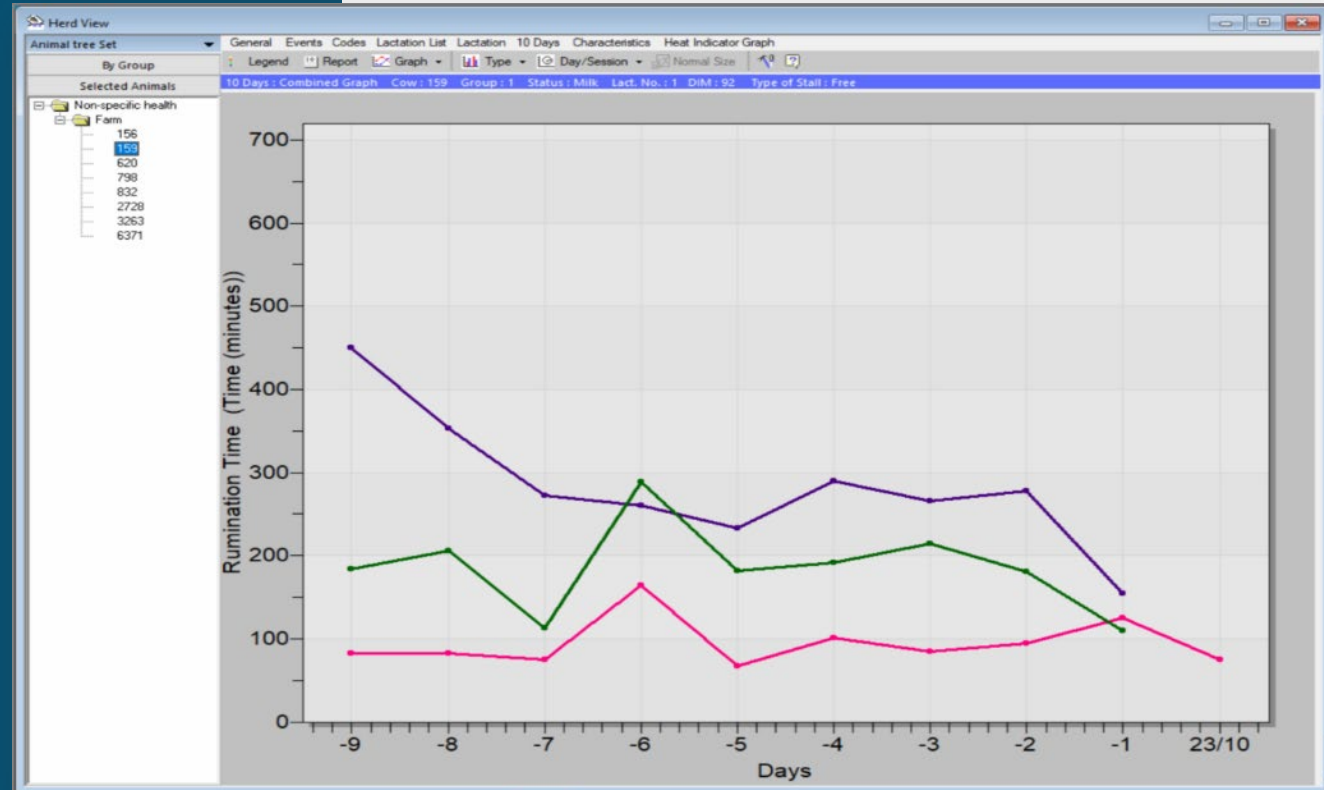
	M	D	H	
Deviation (%)	45	45	45	-
Consecutive deviation in hours	3	3	3	

Defaults

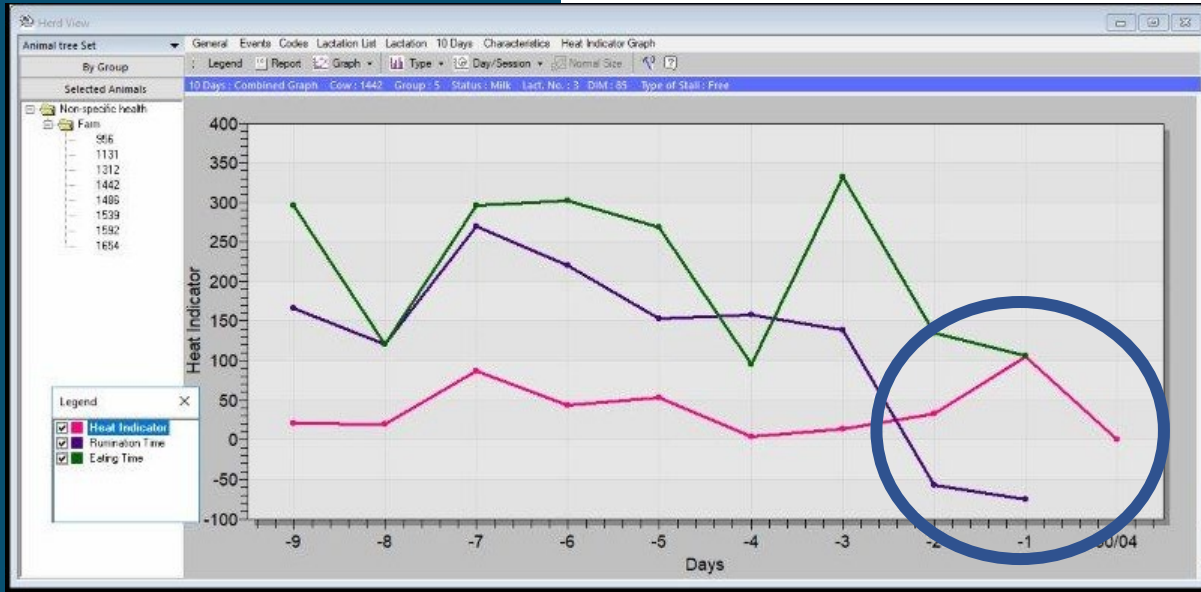
OK Cancel Help

CONHECIMENTO VITAL EM CADA MOVIMENTO

Gráfico
de animais
enfermos

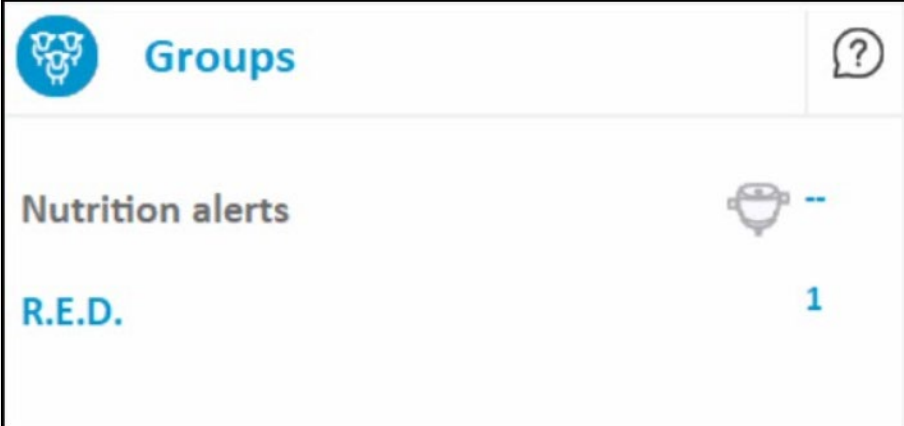




CONHECIMENTO VITAL EM CADA MOVIMENTO



CONHECIMENTO VITAL EM CADA MOVIMENTO

Relatório
de grupos

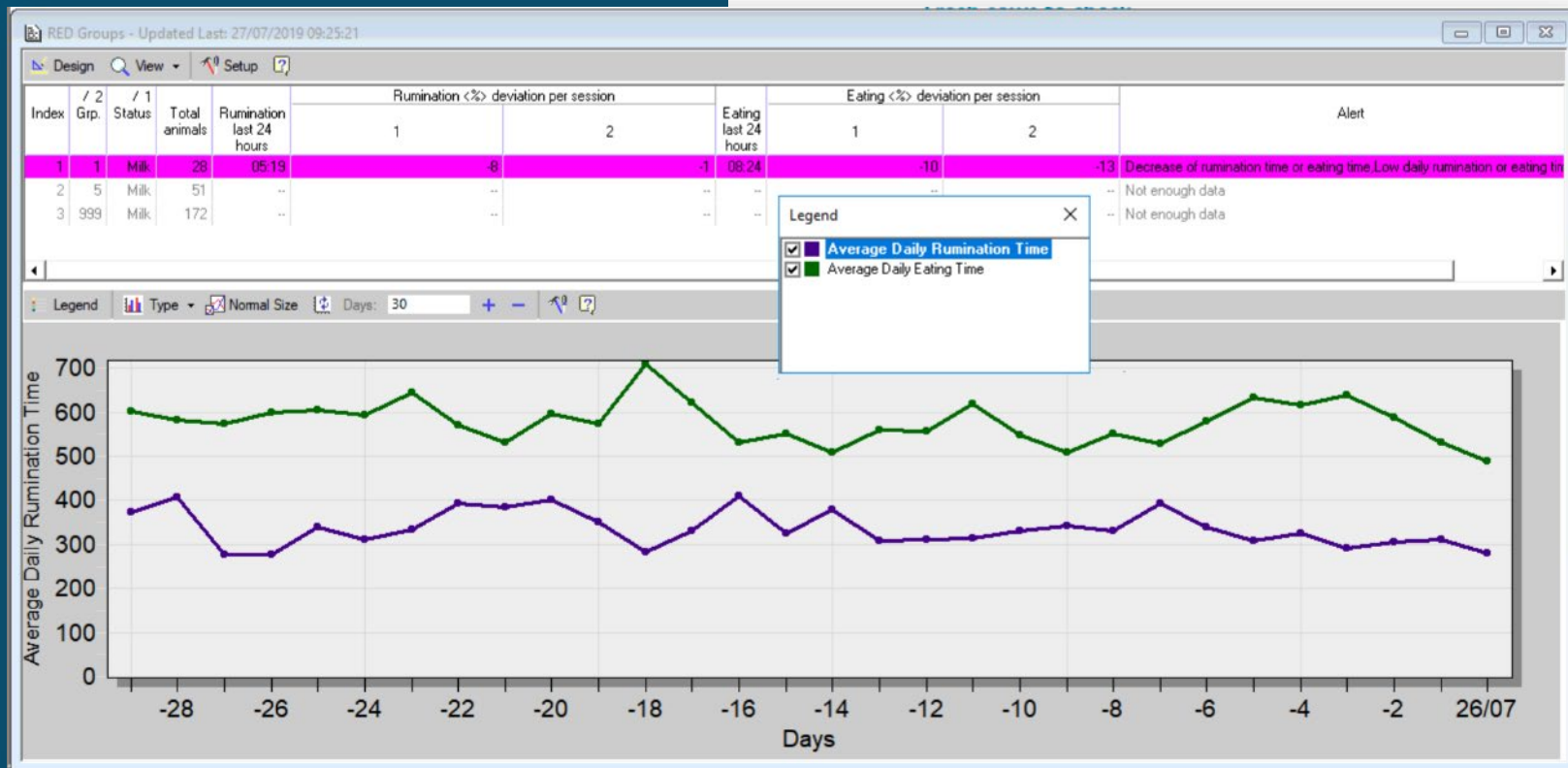


Groups		?
Nutrition alerts		--
R.E.D.		1

CONHECIMENTO VITAL

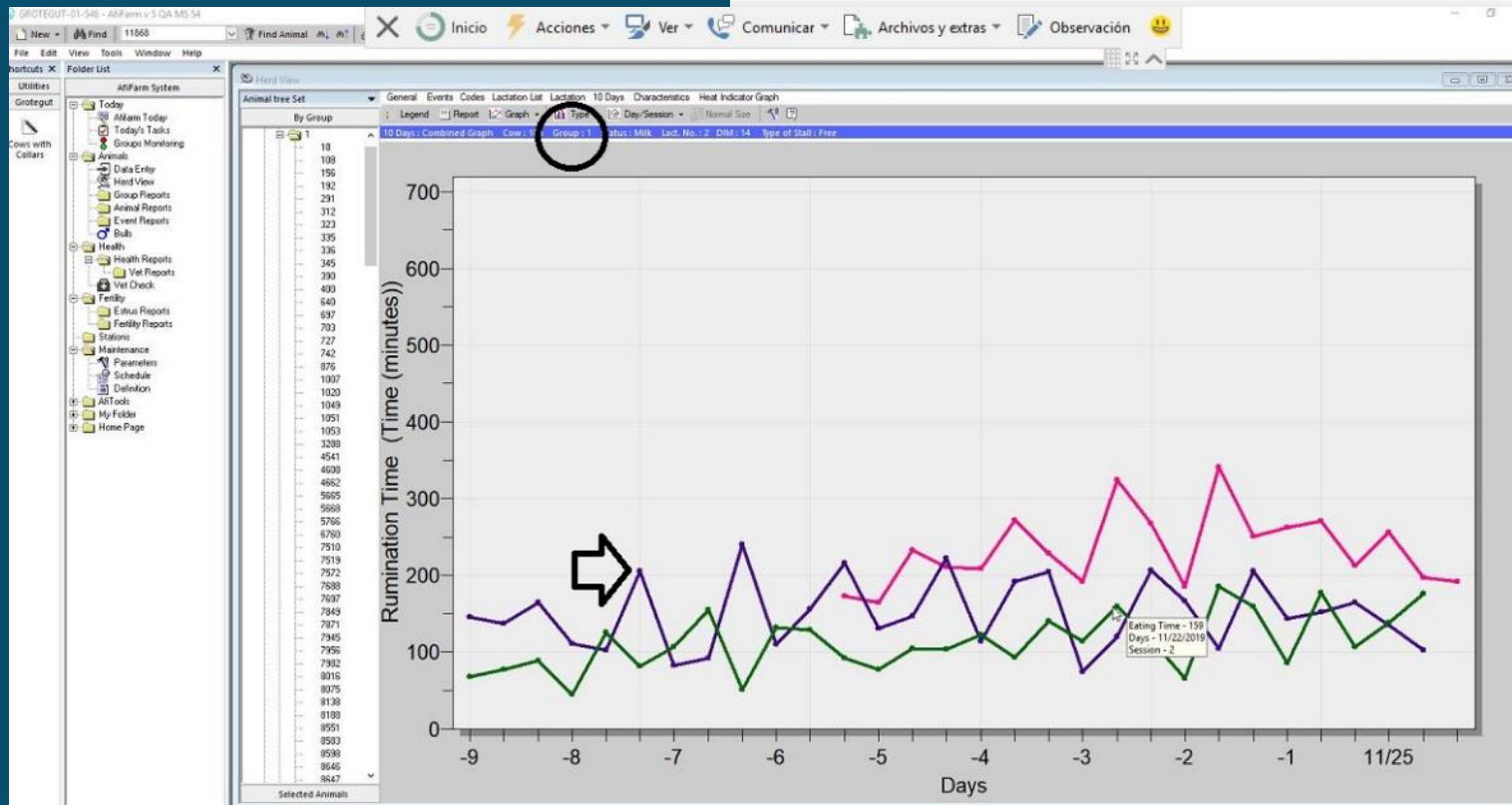
EM CADA MOVIMENTO

Relatórios de grupo



CONHECIMENTO VITAL EM CADA MOVIMENTO

GRUPOS: mais de 75% + de 30 colares.



CONHECIMENTO VITAL EM CADA MOVIMENTO



AfiFarmTM

5.4

**Novos
conteúdos**



CONHECIMENTO VITAL EM CADA MOVIMENTO

Aficontrol Colares: seguimentos e histórico configurável

The screenshot displays the Aficontrol software interface. The top navigation bar includes 'Monitoring', 'Settings', and 'Tools'. On the left, there is a 'System View' sidebar with a tree structure showing 'New Farm', 'AFIACI', 'Processes', and 'AFIACI AFIACII'. Below this is a 'Reports' sidebar with categories like 'System Reports', 'Sites', 'Device', 'Tags', and 'Collars'. The main window is titled 'Collars Data' and shows a data table for the site 'AFIACI AFIACII'. The table columns are: Time, Collar ID, Animal ID, Animal Status, Animal Group Number, Kinetics R, Ingestion Time, Ingestion Sequence, and Ingestion Variance Frequency. The data rows show various ingestion events for different animals and collars over time.

	Time	Collar ID	Animal ID	Animal Status	Animal Group Number	Kinetics R	Ingestion Time	Ingestion Sequence	Ingestion Variance Frequency
1	Monday, November 25, 201...	101000255	11452	Mik	9	12196908			
2	Monday, November 25, 201...	101000255	11452	Mik	9		Monday, November 25, 2...	5218290	[5.19922:1.73438] [5.23047:2.31836] [5.30469:2.37891] [5.22656:2.30859] [5.22656:1.724
3	Monday, November 25, 201...	101000119	640	Mik	1	11201902			
4	Monday, November 25, 201...	101000119	640	Mik	1		Monday, November 25, 2...	4854330	[2.20898:1.67969] [2.91406:1.81399] [2.22852:1.75781] [4.5:1.43048] [2.79102:0.604492]
5	Monday, November 25, 201...	101000470	11392	Mik	6	12926550			
6	Monday, November 25, 201...	101000470	11392	Mik	6		Monday, November 25, 2...	5269590	[5.24609:1.10742] [2.61133:1.0498] [3.31055:2.02539] [6.82031:1.10742] [4.83984:1.8955
7	Monday, November 25, 201...	5000	12380	Mik	3				
8	Monday, November 25, 201...	4712							
9	Monday, November 25, 201...	4507	1044	Mik	3				
10	Monday, November 25, 201...	101000343	1052	Mik	7	13161926			
11	Monday, November 25, 201...	4988	12216	Mik	3				
12	Monday, November 25, 201...	3742	11524	Mik	3				
13	Monday, November 25, 201...	4596	12326	Mik	3				
14	Monday, November 25, 201...	101000658	11772	Mik	1	2560471			
15	Monday, November 25, 201...	101000658	11772	Mik	1		Monday, November 25, 2...	1178190	[2.88672:2.40234] [2.87861:1.88379] [3.03711:2.125] [2.97856:1.72754] [3.3125:2.32227]
16	Monday, November 25, 201...	5159							
17	Monday, November 25, 201...	101000299	10359	Mik	1	5174961			
18	Monday, November 25, 201...	101000299	10359	Mik	1		Monday, November 25, 2...	2523420	[7.16016:1.14258] [6.83594:1.31641] [6.93313:0.975098] [7.10938:1.11035] [7.16797:0.85
19	Monday, November 25, 201...	4437	9942	Mik	7				
20	Monday, November 25, 201...	101000298	11806	Mik	1	385477			
21	Monday, November 25, 201...	101000298	11806	Mik	1		Monday, November 25, 2...	210060	[5.22656:2.28006] [5.45703:2.62111] [3.46484:2.66602] [5.58594:2.63627] [5.35938:2.385
22	Monday, November 25, 201...	4972							
23	Monday, November 25, 201...	101000723	11909	Mik	1	923056			
24	Monday, November 25, 201...	101000723	11909	Mik	1		Monday, November 25, 2...	471960	[6.35547:0.909688] [7.30859:1.25488] [6.9375:1.0332] [6.66016:0.995117] [6.89063:1.160
25	Monday, November 25, 201...	101000530	227	Mik	7	13669077			
26	Monday, November 25, 201...	101000530	227	Mik	7		Monday, November 25, 2...	5355270	[6.91406:1.46191] [7.70313:1.81738] [7.08984:1.19434] [6.55859:1.43262] [6.82203:1.112
27	Monday, November 25, 201...	101000755	8858	Mik	8	12701814			
28	Monday, November 25, 201...	101000755	8858	Mik	8		Monday, November 25, 2...	4912650	[6.30859:1.42773] [7.22266:1.60352] [4.57813:1.36426] [7.14453:1.15918] [7.23438:0.816
29	Monday, November 25, 201...	3742	11524	Mik	3				
30	Monday, November 25, 201...	101000687	54120	Mik	6		Monday, November 25, 2...	3506490	[5.77734:1.33301] [5.80859:1.6582] [5.64044:1.3418] [4.67969:1.4541] [6.56641:0.705566
31	Monday, November 25, 201...	5164	9827	Mik	7				
32	Monday, November 25, 201...	101000322	52681	Mik	8	11831005			
33	Monday, November 25, 201...	101000550	10298	Mik	1	1241514			
34	Monday, November 25, 201...	101000550	10298	Mik	1		Monday, November 25, 2...	472860	[7.01953:0.837402] [5.61328:1.15372] [5.59766:1.56543] [6.61719:1.04492] [3.64844:1.06
35	Monday, November 25, 201...	101000666	345	Mik	1	2842380			
36	Monday, November 25, 201...	101000666	345	Mik	1		Monday, November 25, 2...	1175490	[2.37109:2.11523] [2.38477:1.64551] [3.28516:0.896484] [1.76855:1.08780] [2.00977:1.56